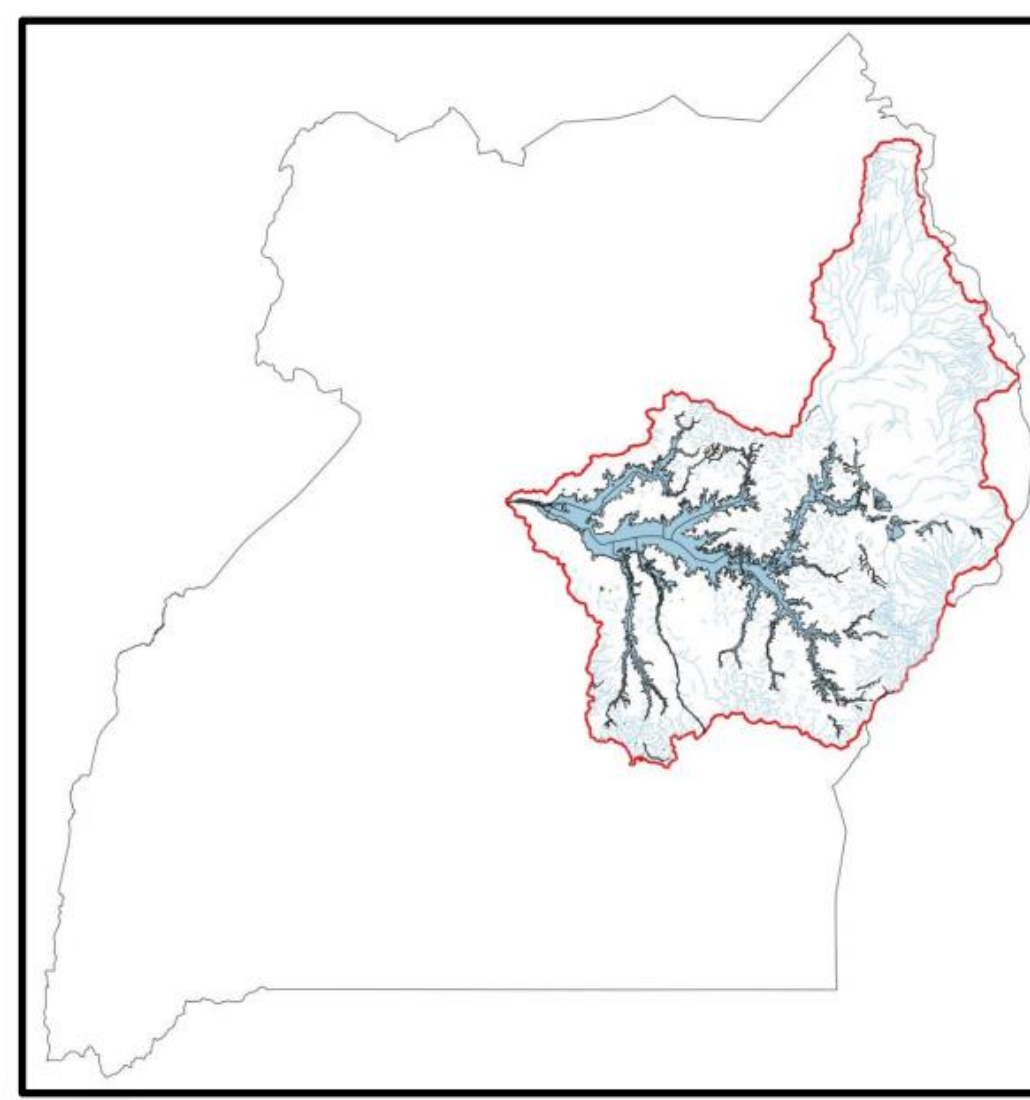


FISHES OF THE LAKE KYOGA BASIN, UGANDA



<i>Protopterus aethiopicus</i> Marbled lungfish 200TL				<i>Oreochromis niloticus</i> Nile tilapia 60SL Introduced	<i>Lates niloticus</i> Nile perch 200TL Introduced
<i>Mormyrus macrocephalus</i> LC/VU 42TL	<i>Enteromius paludinosus</i> Straightfin barb 15SL	<i>Enteromius neumayeri</i> Neumayer's barb 11.8SL		<i>Oreochromis variabilis</i> Victoria tilapia 30SL NT/NT	<i>Coptodon zillii</i> Redbelly tilapia 40SL Introduced VU/LC
<i>Mormyrus kannume</i> Elephant-snout fish 100SL	<i>Enteromius kerstenii</i> Redspot barb 9SL	<i>Enteromius nyanzae</i> Nyanza barb 7SL Presence uncertain		<i>Haplochromis (Astatotilapia) barbarae</i> presence uncertain DD/CR 10.6SL	<i>Oreochromis leucostictus</i> Blue spotted tilapia 36.3SL Introduced
<i>Mormyrus caschive</i> 100TL Presence uncertain VU/LC	<i>Enteromius jacksoni</i> Jackson's barb 11.6SL Possibly extant	<i>Bagrus docmak</i> Semutundu 127TL	<i>Oncorhynchus mykiss</i> Introduced 122TL	<i>Astatoreochromis alluaudi</i> Alluaud's haplo 19SL	<i>Oreochromis esculentus</i> Singida tilapia 50SL NT/NT
<i>Marcusenius macrolepidotus</i> Bulldog 32TL	<i>Enteromius alberti</i> Presence uncertain 7.4SL	<i>Schilbe intermedius</i> Silver catfish 50SL	<i>Clariallabes petricola</i> Victoria snake catfish 8.5SL Possibly Extant	<i>Haplochromis (Harpagochromis) guiarti</i> DD/CR	<i>Pseudocrenilabrus multicolor</i> Egyptian mouth-brooder 8TL
<i>Petrocephalus degeni</i> 8.1SL	<i>Enteromius yongei</i> Nzoia barb 5.6SL Possibly extant	<i>Clarias gariepinus</i> North African catfish 170TL	<i>Rastrineobola argentea</i> Silver cyprinid 8TL	<i>Haplochromis (Neochromis) simotes</i> Endemic EN/DD	<i>Haplochromis (Paraladochromis) flavus</i>
<i>Marcusenius victoriae</i> Victoria stonebasher 26TL	<i>Enteromius radiatus</i> Redeye barb 12SL Presence uncertain	<i>Clarias liocephalus</i> Smoothhead catfish 32TL	<i>Haplochromis (Xystichromis) nuchisquamulatus</i> Possibly extant NT/DD	<i>Haplochromis (Pundamilia) macrocephalus</i> DD/VU	<i>Haplochromis (Pundamilia) pundamilia</i> NT/LC
<i>Cyphomyrus grahami</i> Graham's stonebasher 25SL	<i>Enteromius magdalenae</i> Bunjako barb 6.8SL Presence uncertain	<i>Clarias wernerii</i> Werner's catfish 23TL Possibly extant	<i>Haplochromis (Lipochromis) cryptodon</i> Presence uncertain	<i>Haplochromis (Pundamilia) igneopinnis</i> DD/EN	<i>Haplochromis (Neochromis) greenwoodi</i>
<i>Pollimyrus nigricans</i> Dark stonebasher 10SL	<i>Enteromius apleurogramma</i> East African red finned barb 5.4SL	<i>Clarias alluaudi</i> Alluaud's catfish 23TL	<i>Haplochromis (Psammochromis) riponianus</i>	<i>Haplochromis (Allochromis) welcommei</i> Presence uncertain DD/VU	<i>Haplochromis (Harpagochromis) spekii</i> Possibly extant DD/DD
<i>Gnathonemus longibarbis</i> Longnose stonebasher 36TL	<i>Labeo horie</i> 57TL Possibly extant VU/LC	<i>Synodontis afrofisheri</i> Fischer's Victoria squeaker 17.7SL	<i>Haplochromis (Labrochromis) pharyngomyilus</i> Presence uncertain DD/DD	<i>Haplochromis (Harpagochromis) squamulatus</i> Presence uncertain	<i>Haplochromis (Astatotilapia) nubilus</i> Blue Victoria mouthbrooder NT/VU
<i>Brycinus macrolepidotus</i> True big-scale tetra Possibly extant VU/LC 53 SL	<i>Labeo victorianus</i> Ningu NT/CR 41SL	<i>Synodontis victoriae</i> Lake Victoria squeaker 35SL	<i>Haplochromis (Neochromis) nigricans</i> NT/DD	<i>Haplochromis (Lipochromis) microdon</i> VU/CR	<i>Haplochromis (Labrochromis) hunilior</i> Possibly extant
<i>Brycinus sadleri</i> Sadler's robber 13.8TL	<i>Labeo coubie</i> African carp Presence uncertain VU/LC 75SL	<i>Amphilius lujani</i> VU/LC 12SL	<i>Haplochromis (Paralabidochromis) chromogynus</i> Presence uncertain DD/VU	<i>Haplochromis (Neochromis) gigas</i> DD/VU	<i>Haplochromis (Lipochromis) parvidens</i> NT/CR
<i>Brycinus nurse</i> Nurse tetra 25TL Possibly extant VU/LC	<i>Labeobarbus altianalis</i> Ripon barbel 90TL	<i>Amphilius jacksonii</i> Marbled mountain catfish Presence uncertain 15TL	<i>Haplochromis (Prognathochromis) pellegrini</i> NT/LC	<i>Haplochromis (Prognathochromis) denticostoma</i>	<i>Haplochromis (Mbipia) mbipi</i> DD/LC
<i>Brycinus jacksonii</i> Victoria robber 27SL	<i>Zaireichthys rotundiceps</i> Spotted sand catlet 3.8SL	<i>Garra dembeensis</i> Dembea stone lapper Possibly extant 11SL	<i>Haplochromis (Lipochromis) maxillaris</i> DD/VU	<i>Haplochromis (Prognathochromis) xenostoma</i> Presence uncertain DD/CR	<i>Haplochromis (Prognathochromis) macrognathus</i> Presence uncertain DD/CR
<i>Lacustricola vitschumbaensis</i> Bitschumbi lampeye 5.5TL Possibly extant	<i>Nothobranchius robustus</i> Red Victoria nothobranch 5.5TL	<i>Haplochromis lividus</i>	<i>Haplochromis (Prognathochromis) longirostris</i> Presence uncertain DD/CR	<i>Haplochromis (Lithochromis) rufus</i> NT/LC	<i>Haplochromis (Harpagochromis) worthingtoni</i> Endemic Possibly extant
<i>Nothobranchius ugandensis</i> Uganda nothobranch 5SL	<i>Lacustricola margaritatus</i>	<i>Haplochromis (Psammochromis) saxicola</i> Possibly extant NT/DD	<i>Haplochromis (Prognathochromis) argenteus</i> Presence uncertain DD/CR	<i>Haplochromis (Paralabidochromis) plagiodon</i> Presence uncertain NT/VU	<i>Haplochromis (Lipochromis) melanopterus</i> Presence uncertain DD/VU
<i>Nothobranchius taiti</i> Endemic TL?	<i>Micropachax loati</i> Nile killifish 4TL Possibly extant	<i>Gambusia affinis</i> Mosquitofish 5.1TL Introduced	<i>Haplochromis (Paralabidochromis) sauvagei</i> NT/VU	<i>Haplochromis (Prognathochromis) gowersii</i> Presence uncertain	<i>Haplochromis (Lipochromis) oboesus</i> NT/CR
<i>Lacustricola bukobanus</i> Bukoba lampeye 5TL Possibly extant	<i>Lacustricola centralis</i> Cental east african lampeye 3.3TL	<i>Poecilia reticulata</i> Guppy 5TL Introduced	<i>Haplochromis (Lipochromis) aelocephalus</i> DD/CR	<i>Haplochromis (Xystichomis) phytophagus</i> NT/DD	<i>Haplochromis obliquidens</i> NT/VU
<i>Ctenopoma muriei</i> Ocellated labyrinth fish 6SL	<i>Mastacembelus frenatus</i> Longtail spiny eel 40SL	<i>Haplochromis (Psammochromis) acidens</i>			

The Lake Kyoga basin is a watershed encompassing Lake Kyoga, all the rivers, and wetlands associated with the lake. The images are from the Freshwater Biodiversity Portal for Uganda (freshwaterbiodiversity.go.ug), FishBase (fishbase.org), NaFIRRI, and publications by many scientists. Dummy pictures are used for lack of actual images for some species. The text in italics refers to scientific name. Common names are given if available. **Possibly extant** which means absence of a record of the species in the last 30 years. **Possibly extinct** means that evidence of existence is difficult to verify. **Presence uncertain** means that the presence of the species is doubted. EN, VU, DD, LC, & NT are extinction risk categories on the national red list for the fishes of Uganda vs the global red list of the IUCN. Developed by: Ashiraf Kamya & Laban Musinguzi